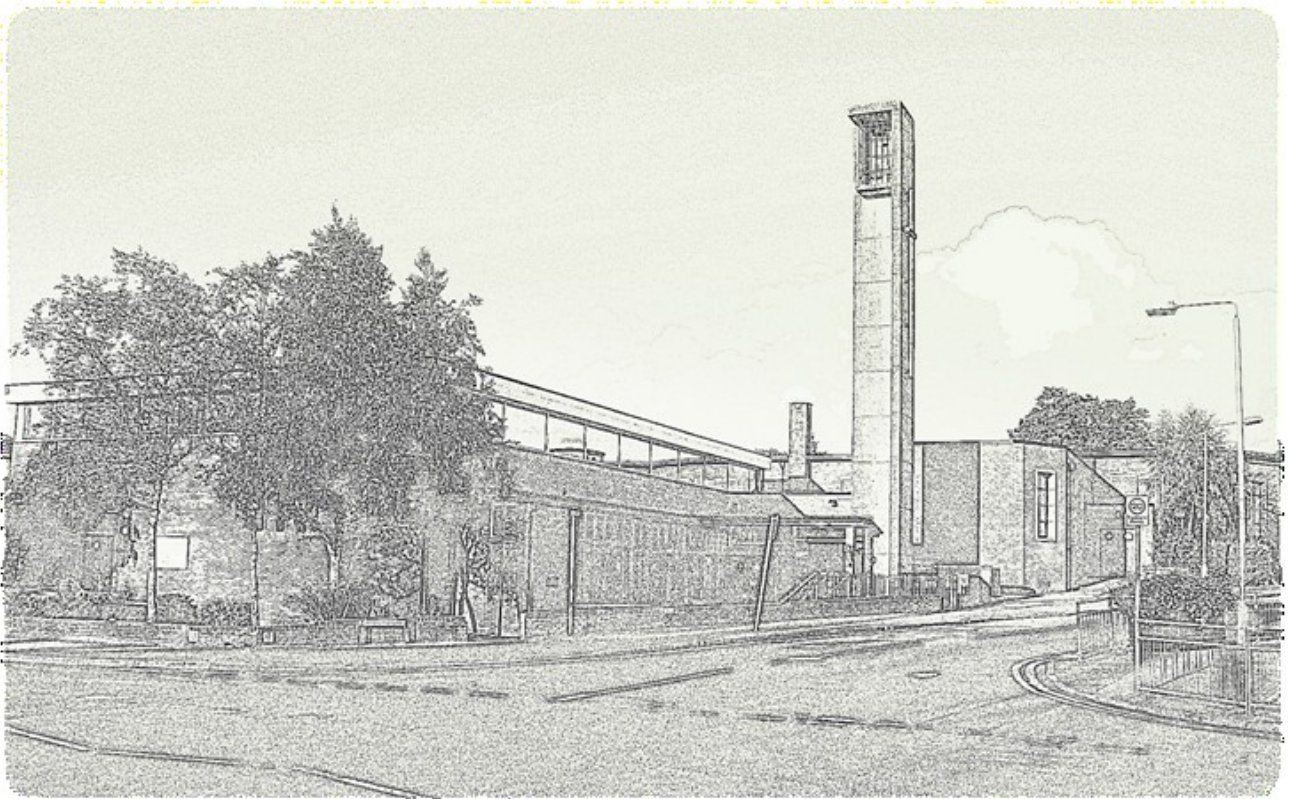


# Stamperland Parish Church of Scotland, Clarkston



# ANNUAL REPORT 2018

**Congregation No: 160885**

**Charity No: SC003155**

## Reference and Administrative Information

Charity Name: Stamperland Parish Church of Scotland, Clarkston  
Charity Registration Number: SC003155  
Congregation Reference No: 160885  
Contact Address: Mrs Kay Bolton  
Stamperland Parish Church  
Stamperland Gardens  
Glasgow  
G76 8LJ

### Trustees

### Elders

Mrs Catherine Baird  
Miss Janet Barr  
Rev Scott Blythe  
Mrs Kay Bolton  
Norman Bolton  
Connell Cranston  
Mrs Jane Curror  
John Curror  
George Finlayson (retired 15/6/18)  
Mrs Agnes Fisher

Alastair Graham  
Mrs Evelyn Graham  
Mrs Janet Herriot  
Ronald Kirkwood  
Mrs Anne MacKenzie  
Fraser Mackintosh  
Mrs Rachel McNiven (retired 30/12/18)  
James Mathieson (died 12/9/18)  
Mrs Margo Neilson  
Mrs Marie Owens

Steven Owens  
William Paterson  
Raymond Russell  
Scott Russell  
Miss Grace Scott  
Mrs Sheena Skelton  
Miss Janet Stewart  
Keith Walton

### Members of Congregation

Roy Allan  
Derrick Brown (retired 31/3/18)  
Mrs Karen Cramb  
Mrs Jean Cranston  
George Fairweather

Alan Henderson  
Colin Kirkwood  
Mrs Alison Macfarlane  
Fraser Neilson  
Miss Elizabeth Robb

Mrs Jackie Silcock  
Norman Walker  
Mrs Margot Young

### Principal Office-bearers

Minister: Rev Scott Blythe  
Session Clerk: Mr Norman Bolton  
Church Treasurer: Mrs Kay Bolton

### Independent Examiner

Alexander Johnston, CA  
9 Williamwood Park  
Netherlee  
Glasgow  
G44 3TD

### Bankers

Royal Bank of Scotland  
Giffnock (B) Branch  
158 A Fenwick Road  
Giffnock  
Glasgow  
G46 6XB

## Trustees' Annual Report Year ended 31<sup>st</sup> December 2018

### STRUCTURE, GOVERNANCE AND MANAGEMENT

#### Governing Document

Stamperland Parish Church of Scotland, Clarkston is administered in accordance with the terms of the Unitary Constitution.

#### Recruitment and Appointment of Trustees

Under the Unitary Constitution all elders are charity trustees. Elders are chosen from those members of the church who are considered to have the appropriate gifts, skills and commitments to undertake, along with the minister, responsibility for the life of the congregation in all its aspects including worship, mission and service to the wider community. The minister is elected by the congregation and inducted by Presbytery and is automatically a trustee. When there is no minister, Presbytery appoint an Interim Moderator; the Interim Moderator is automatically a trustee.

Additional trustees are appointed from within the congregation and members of the congregation are invited to nominate individuals who have the skills and commitment to contribute to the management of the church, particularly in relation to the maintenance and development of the fabric of the church buildings and to the financial affairs of the church. These additional trustees may be elected and appointed at the Stated Annual Meeting of the Congregation or co-opted to serve as trustees.

#### Organisational Structure

Kirk Session meetings attended by all trustees are held approximately eight times a year. Moderated by the minister (or interim moderator if the church is vacant) these meetings provide the forum for decision making. Attendance is open to all members of the church and all members may contribute to debates. However, only elders and additional trustees have decision-making authority.

Within the Kirk Session there are nine permanent committees each with specific remits to inform, oversee and manage the work of the church. In addition there are trustees who have responsibility for overseeing Health & Safety (H&S), protection of vulnerable groups (PVG) and food hygiene. A chart showing the organisational structure is presented on page 7.

### OBJECTIVES AND ACTIVITIES

The Church of Scotland is Trinitarian in doctrine, Reformed in tradition and Presbyterian in polity. It exists to glorify God and to work for the advancement of Christ's Kingdom throughout the world. As a national church, it acknowledges a distinctive call and duty to bring the ordinances of religion to the people in every parish of Scotland through a territorial ministry. It co-operates with other churches in various ecumenical bodies in Scotland and beyond.

In Stamperland Parish Church, Sunday Worship, to which anyone has access, takes place every Sunday morning. The sacrament of Holy Communion is celebrated four times a year. The church is open on a Wednesday morning offering a period of quiet reflection and contemplation. Additional services take place at significant times, for example, Easter and Christmas.

Christian Education for youth takes place on Sunday mornings with the BB Bible Class and Sunday School departments catering for those aged between three and 18 years. For adults, there is a House Group which meets fortnightly for Bible study. The minister's provision of teaching and discussion material as well as church membership instruction classes provides a means for the Christian education of adults.

#### VISION AND MISSION STATEMENT

To bring God's message.  
To be the focus of people's lives.  
To be seen as something people want to be a part of.  
To reach out to people, supporting them, showing care, compassion, love and fun.  
Our church should be a joy to belong to, a meaningful part of the community.  
Our church should move with the times and always be relevant ... both here and in the wider world.

The Guild meets every Tuesday evening from October to March and offers a varied and highly enjoyable programme of speakers, music and crafts, tea and fellowship. The Guild is open to all people.

The church seeks to support and minister to all people within the parish and beyond and we therefore seek to engage with people in a variety of ways. Over the past six or seven years we have made the church premises available for the “Heart for Art” project which uses creative art to provide therapy for people with dementia, enhancing their feelings of self worth and achievement. Classes are held on Friday afternoons. In relation to interaction with youth, our minister serves as a chaplain to Williamwood High School and Netherlee Primary School. Netherlee Primary school is welcomed into the church for Christmas, Easter and end-of-term services.

The church supports Youth Organisations including The Boys’ Brigade, The Scouts and The Guides which, together, provide a wide range of activities enjoyed by over 200 young people each week. Membership of The Scouts and The Guides is open to all young people regardless of their religious beliefs.

The church and associated organisations arrange a variety of social and fund-raising activities; these include Spring and Christmas Fairs, concerts, quizzes and a range of social events, all of which are open to the general public. Occasional events are specifically targeted to encourage families with young children to attend.

Hall accommodation is provided for a range of community activities and occasional meetings of local community groups. The halls are used by organisations including Baby Sensory, which provides sensory development activities for babies and parents, Sounds International, an adult choir drawing its membership from people of diverse nationalities and religious backgrounds and EROS Musical Society, an amateur dramatics society based in Clarkston

The safety and security of all people attending and using the church and associated halls is of great importance. The church has a co-ordinator for the Protection of Vulnerable Groups (PVG) and all adults who have contact with children and young people in the Youth Organisations have clearance through Disclosure Scotland. CCTV recordings are made of people entering and leaving the halls. Health and Safety is an agenda item at all meetings of the Kirk Session and safety procedures are regularly reviewed. PVG is an agenda item at all regular meetings of the Kirk Session.

Members of the church are active within the local community and are involved with community councils, neighbourhood watch schemes, health boards, etc..

Members are also active in supporting various charities and organisations both by giving of their time and through financial donations. There is direct involvement with charities such as Christian Aid, with homes for the elderly including, specifically, Williamwood House, and with organisations such as The Lodging House Mission. Members of the church lead the service at Mearnskirck Hospital on a regular basis and the minister conducts a monthly service at Clarkston Care Home.

As a parish church there is a desire to support those in the parish in times of stress and the church is always there to offer various types of support to those living in the parish. Often the need for support and its nature is confidential but an obvious example is support at a time of bereavement.

## **ACHIEVEMENTS AND PERFORMANCE**

On 6<sup>th</sup> September 2018 a Service of linkage was held in Netherlee Parish Church to mark the formal linking of the congregations of Netherlee and Stamperland and recognise Rev Scott Blythe as minister of the two linked congregations. Since the linkage there have been a number of joint services held in both churches.

The year 2018 ended with 276 members on the Congregational Roll, 5 fewer than the previous year. Three new members joined the church. Six members died and two transferred to other churches.

The number of young people attending Stepping Stones was 15, the same number as the previous year; there were, in addition, three teenage helpers. Over the year the uniformed organisations (Scouts, Guides and Boys’ Brigade) have enjoyed an increase in numbers with the combined roll standing at 220 in December 2018. The number of youths attending the Scout Group is 72 with 34 being in the Scout and Explorer Scout sections. There are 83 girls in the Guide Association of whom 30 are members of the Guide company section. There is a total of 65 boys in the BB, 27 of whom are members of the Company section. The number of Anchor Boys and Junior members has increased markedly in the last two years reflecting a good response to a recruitment campaign and high levels of retention. Both Guides and Rainbows have waiting lists and all organisations would welcome additional adult leaders. The growing numbers of young people attending the uniformed organisations is very encouraging and is testament to the hard work of the leaders of the organisations and the inspiring activities they provide.

The numbers attending ‘Sunday Break’ at the close of morning worship are steady at around two dozen and a similar number of people attend ‘Open Door’ on Wednesday mornings. Holy Week services were well attended as was the early morning Dawn Easter Day Service in Linn Park which was, this year, also attended by members from Netherlee Parish Church. Some of the Holy Week services were led by elders.

During the year, the minister conducted two baptisms, one wedding and four funerals. Support for bereaved families is demonstrated in a number of ways including through the “Flower Ministry” in which the flowers on display in the church sanctuary at the Sunday morning service are distributed to people within the congregation or parish as a token of remembrance or thanks. Additionally, the church maintains a Book of Remembrance recording the names of deceased persons who have a link with the church and parish. The Book of Remembrance is on public display.

Through a variety of initiatives the church strives to maintain its reputation and promote its profile within the parish. The church’s presence on the internet, including Facebook and YouTube, is indicative of new and different forms of contact. Wireless internet connection is available within the church hall accommodation.

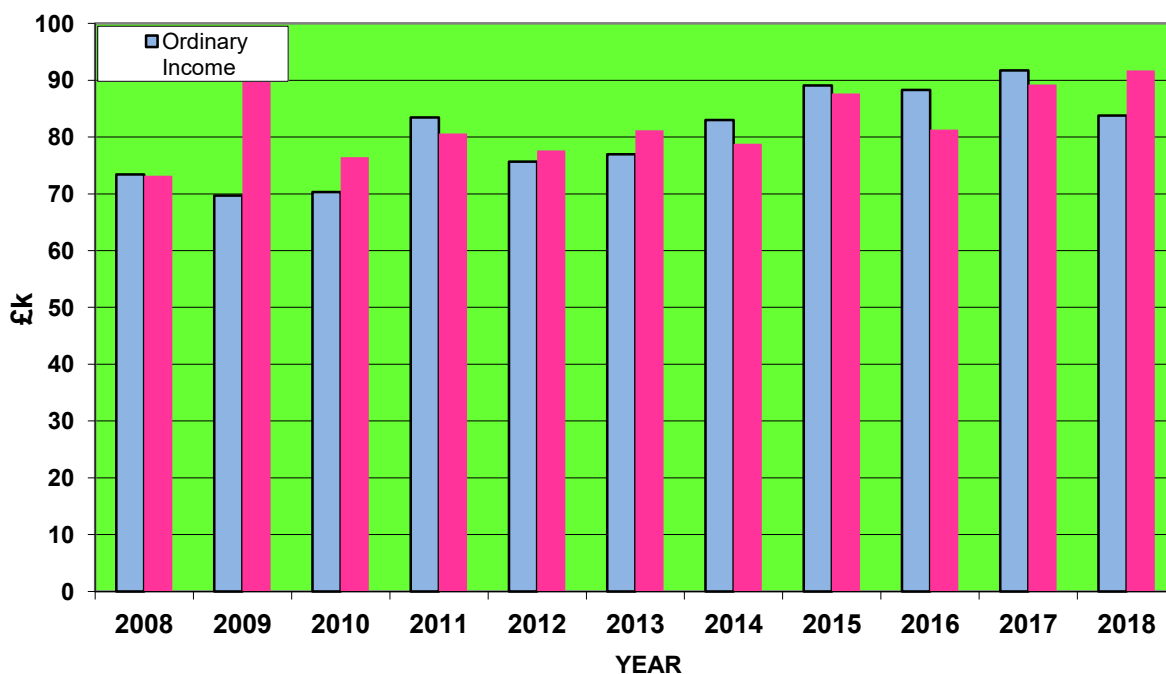
As well as supporting charitable activities within the church and parish, £832 was raised through Special Collections and Fund Raising Events for the specific causes or charities. Details of amounts raised are summarised in Note 8 on page 13.

In addition to purely financial donations, a large quantity of tins and packets of food donated at the Harvest Thanksgiving service was taken to the Lodging House Mission. In the autumn a significant number of filled shoeboxes were donated to Blytheswood Care. The church continued its support for the East Renfrewshire Food Bank in Barrhead with church members making regular donations throughout the year and special donations of gifts at Christmas.

## FINANCIAL REVIEW

In common with most churches, our membership has been in decline for the last 50 years. From a peak membership of 1,030 in 1959, the current membership of 276 is the lowest figure recorded since the establishment of the church in 1940. Over the last ten years membership has reduced from 408 – a reduction of one third. With reductions in membership, the financial support of the church falls on an ever smaller number of members and, in particular, the members who are actively involved in the life and work of the church.

### INCOME & EXPENDITURE - THOUSANDS OF POUNDS



During the past ten years there have been occasions where our expenditure has exceeded our ordinary income (defined by the Church of Scotland as income minus legacies and bank interest). Efforts have been made to develop a stewardship culture within the membership whereby members are encouraged to regularly review and increase their offerings while, at the same time, a close control of expenditure has been maintained. As a result, in four of the last five years we managed to ensure we have ended our financial year with a surplus of ordinary income over expenditure. In 2018 our ordinary income was less than expenditure and this highlights the importance of actively reinforcing the stewardship culture. In 2018 money from the rental income of the manse was used to cover costs incurred in the maintenance of the buildings.

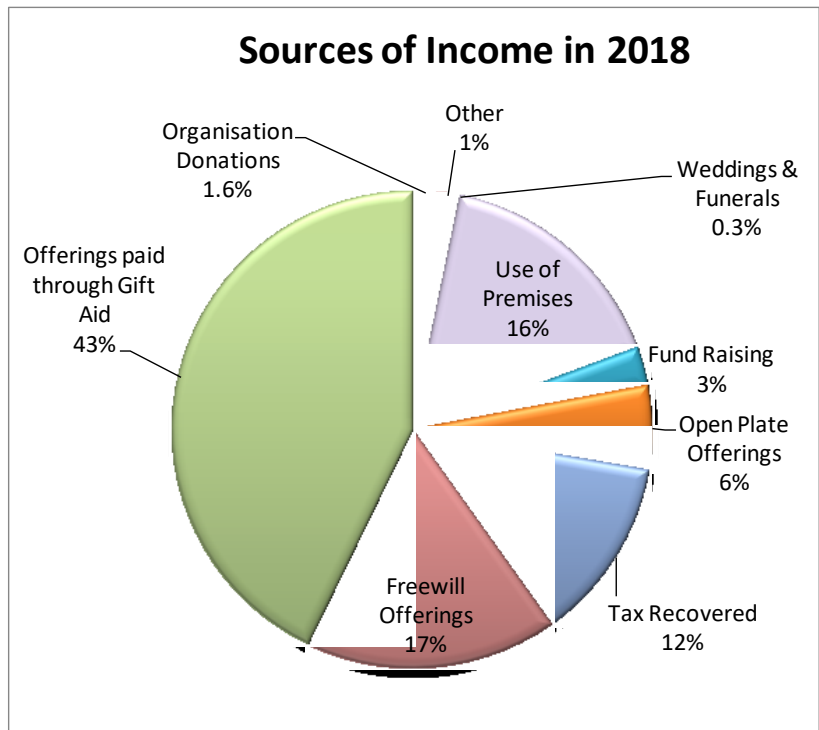
### Analysis of Income

The chart on the right shows a breakdown of the principal sources of income in 2018.

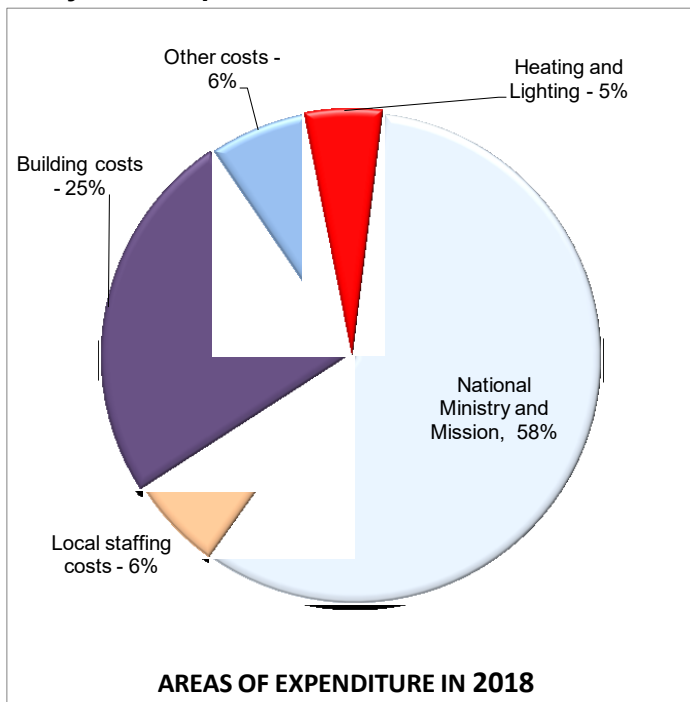
Offerings paid through Gift Aid along with the tax recovered contributed 55% of the regular, "ordinary income". These offerings represent the single most important source of income. Freewill offerings and open plate together accounted for 23% of ordinary income. In 2018, total offerings were five percent lower than the previous year. Fortunately offerings donated through Gift Aid were down by only three per cent.

Income raised by "Fund Raising" was £2,138 around £400 lower than the previous year and well down on the planned target amount.

Income from the use of premises by third parties was £13,481. This amount was three per cent higher than the previous year's income and rental income now represents sixteen per cent of ordinary income. The largest contributor to rental income is Baby Sensory, an organisation which provides sensory development activities for babies from birth to three years of age. They occupy the large and small halls every Monday morning and afternoon. Sounds International use the large hall on Tuesday evenings with EROS Musical Society using this accommodation on Wednesday evenings. A variety of keep-fit classes take place on weekday mornings or afternoons and halls have been made available to various community and local groups for events ranging from art exhibitions to children's parties. There are frequent enquiries from a wide range of organisations seeking to hire accommodation on weekday evenings. However, our halls are already fully used every evening.



### Analysis of expenditure



The chart on the left illustrates the major categories of expenditure in 2018.

The greatest expense is the payment of £53,654 to the National Ministry and Mission Fund and to the Presbytery of Glasgow. This amount includes our contribution to the stipends of ministers and locum ministers within the Church of Scotland, to the wider work of the Church of Scotland and to Glasgow Presbytery. We have no control over our allocation and expenditure on these items represents well over half (58%) of our total expenditure.

In 2018, expenditure associated with the buildings was £22,887. This amount includes fabric repair and maintenance as well as building insurances, Council Tax for the manse, cleaning of the church and halls.

The main item of fabric expenditure was the installation of a new screen and projector system in the sanctuary at a cost of £10,456. Other

significant items of fabric expenditure included maintenance of the gas central heating system in the church (£990), survey of electric wiring to enable completion of the five yearly Electrical Installation Condition Report (EICR) (£912) and replacement of floor coverings in lower corridors (£667). The EICR indicated a number of areas in which upgrading of existing electrical wiring and equipment is required.

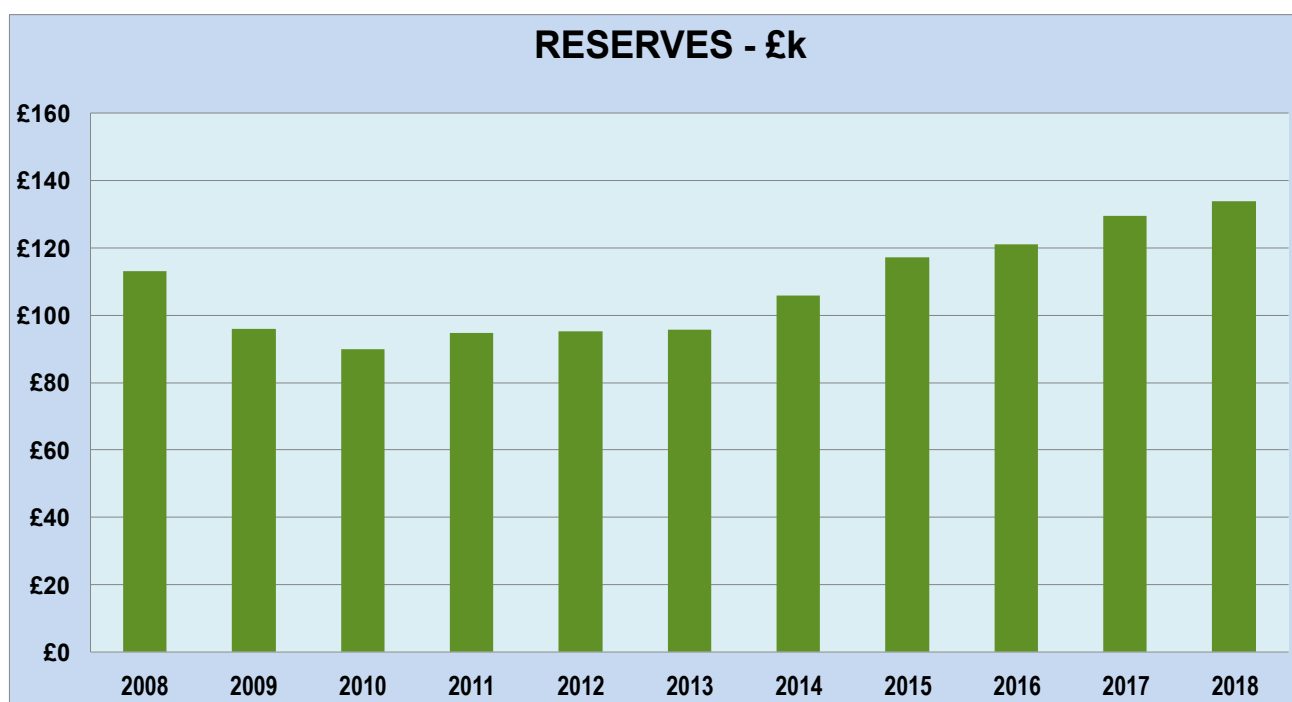
Despite the very cold weather conditions experienced at the beginning of 2018 the cost of gas consumed by the central boilers was ten per cent lower than the previous year. Indeed, expenditure on central heating costs has reduced over the last seven years. Whilst the cost of gas has fallen somewhat in the last four years, the reduction in expenditure owes much to careful attention to ensuring that, whenever possible, heating is restricted to areas of the church buildings actually being occupied by organisations.

By the end of 2017 most of the fluorescent tube lights in the church had been replaced with modern, efficient LED lights to provide not only improved illumination but also savings in electricity consumption. The cost of electricity consumed in 2018 was almost 20 per cent lower than the previous year.

## Reserves Policy

It has been the Trustees' policy to have a reserve in the General Fund of about two month's normal expenditure and, in addition, to have sufficient funds in the Fabric Fund to enable essential repairs to be undertaken and to facilitate the purchase of major capital items such as duplicators, amplifiers, computers, etc. should they become unserviceable and require to be replaced.

The church has been fortunate in receiving a number of legacies. Some of the money from these legacies has been used to cover the deficit between the normal, regular income and the normal, regular expenditure and to enable significant upgrading work to be undertaken.



At the end of 2018 the total bank and cash balances stood at £130,495. The General Fund balance was £8,136; the balance in the Fabric Fund was £121,000; the Copper Fund had a balance of £99; and the balance in the Kean Bequest (a restricted fund specified to be used for the purpose of Elder Training) was £1,260. The value of the investment in the Church of Scotland Investor's Trust Growth Fund at 31<sup>st</sup> December 2018 was £4,167.

It has been the Trustees' policy to maintain a Roof Contingency Fund within the Fabric Fund to meet the cost of renewing the waterproof covering on the flat roof of the sanctuary. The existing roofing material was replaced over 25 years ago and was guaranteed for only ten years. The Trustees have increased the amount allocated to the Roof Contingency Fund to £59,000. The Fabric Fund will be used to meet costs of the electrical upgrading work identified in the EICR as well as other ongoing maintenance activities.

Since autumn 2014 the Stamperland Manse, 109 Ormonde Avenue, Netherlee, has been let to a tenant. Rental income, minus expenses, is paid directly to the General Trustees in Edinburgh. Sums of money from the accumulated rental income can be drawn to meet costs associated with maintenance of the fabric of Stamperland church and the manse. During 2018 a total of £12,034 was drawn from the accumulated funds and at 31<sup>st</sup> December 2018, the funds held by General Trustees on our behalf amounted to £13,913.

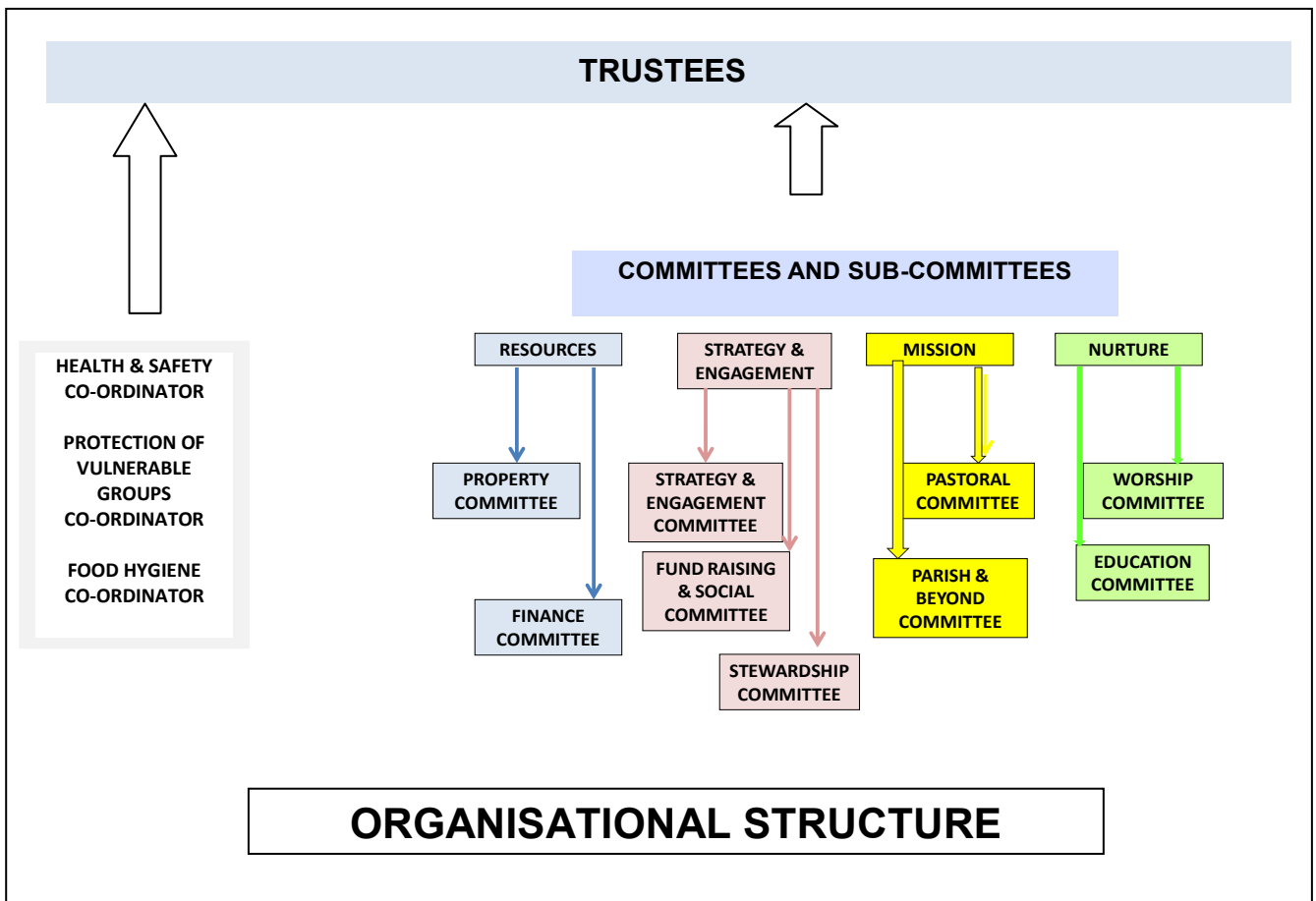
## Statement of Trustees' Responsibilities

The Trustees must prepare financial statements which give sufficient detail to enable an appreciation of the transactions of the Church during the financial year. The Trustees are responsible for keeping proper accounting records which, on request, must reflect the financial position of the Church at that time. This must be done to ensure that the financial statements comply with the Charities and Trustee Investment (Scotland) Act 2005, the Charities Accounts (Scotland) Regulations 2006 (as amended) and the Regulations For Congregational Finance approved by the General Assembly of the Church of Scotland in 2016. They are also responsible for safeguarding the assets of the Church and must take reasonable steps for the prevention and/or detection of fraud and other irregularities.

Approved by the Trustees and signed on their behalf,

A Norman Bolton  
Session Clerk

Date 27<sup>th</sup> January 2019





## **Stamperland Parish Church of Scotland, Clarkston SC003155**

### **Independent Examiner's Report to the Trustees of Stamperland Parish Church of Scotland, Clarkston**

I report on the accounts of the charity for the year ended 31<sup>st</sup> December 2018 which are set out on pages 9 to 13.

#### **Respective responsibilities of trustees and examiner**

The charity's trustees are responsible for the preparation of the accounts in accordance with the terms of the Charities and Trustee Investment (Scotland) Act 2005 and the Charities Accounts (Scotland) Regulations 2006.

The charity trustees consider that the audit requirement of Regulation 10(1) (d) of the Accounts Regulations does not apply. It is my responsibility to examine the accounts as required under section 44(1) (c) of the Act and to state whether particular matters have come to my attention.

#### **Basis of independent examiner's statement**

My examination is carried out in accordance with Regulation 11 of the Charities Accounts (Scotland) Regulations 2006. An examination includes a review of the accounting records kept by the charity and a comparison of the accounts presented with those records. It also includes consideration of any unusual items or disclosures in the accounts, and seeks explanations from the trustees concerning any such matters. The procedures undertaken do not provide all the evidence that would be required in an audit, and consequently I do not express an audit opinion on the view given by the accounts.

#### **Independent examiner's statement**

In the course of my examination, no matter has come to my attention

1. which gives me reasonable cause to believe that in any material respect the requirements:
  - to keep accounting records in accordance with Section 44(1)(a) of the 2005 Act and Regulation 4 of the 2006 Accounts Regulations, and
  - to prepare accounts which accord with the accounting records and comply with Regulation 9 of the 2006 Accounts Regulations have not been met, or
2. to which, in my opinion, attention should be drawn in order to enable a proper understanding of the accounts to be reached.

Alexander Johnston  
Chartered Accountant

9 Williamwood Park  
Netherlee  
Glasgow  
G44 3TD

Date 9th February 2019