

Stamperland Parish Church of Scotland, Clarkston



ANNUAL REPORT

2017

Congregation No: 160885

Charity No: SC003155

Reference and Administrative Information

Charity Name: Stamperland Parish Church of Scotland, Clarkston
Charity Registration Number: SC003155
Congregation Reference No: 160885
Contact Address: Mrs Kay Bolton
Stamperland Parish Church
Stamperland Gardens
Glasgow
G76 8LJ

Trustees

Elders

Mrs Catherine Baird
Miss Janet Barr
Rev Scott Blythe (appointed 30/11/17)
Mrs Kay Bolton
Norman Bolton
Connell Cranston
Mrs Jane Curror
John Curror
George Finlayson
Mrs Agnes Fisher
Alastair Graham

Mrs Evelyn Graham
Rev Gray Fletcher (Retired 30/11/17)
Mrs Janet Herriot
Ronald Kirkwood
Mrs Patricia McIlraith (Retired 22/11/17)
Mrs Anne MacKenzie
Fraser Mackintosh
David McKee (Resigned 11/9/17)
Mrs Rachel McNiven
James Mathieson
Mrs Edith Moseley (Retired 11/6/17)

Mrs Margo Neilson
Mrs Marie Owens
Steven Owens
William Paterson
Raymond Russell
Scott Russell
Miss Grace Scott
Mrs Sheena Skelton
Miss Janet Stewart
Keith Walton

Members of Congregation

Roy Allan
Derrick Brown
Mrs Karen Cramb (Elected 12/3/17)
Mrs Jean Cranston
George Fairweather

Alan Henderson
Colin Kirkwood (Elected 12/3/17)
Mrs Alison Macfarlane
Fraser Neilson
Miss Elizabeth Robb

Mrs Jackie Silcock
Norman Walker
Mrs Margot Young

Principal Office-bearers

Minister: Rev Scott Blythe
Session Clerk: Mr Norman Bolton
Church Treasurer: Mrs Kay Bolton

Independent Examiner

Alexander Johnston, CA
9 Williamwood Park
Netherlee
Glasgow
G44 3TD

Bankers

Royal Bank of Scotland
Giffnock (B) Branch
158 A Fenwick Road
Giffnock
Glasgow
G46 6XB

Trustees' Annual Report Year ended 31st December 2017

STRUCTURE, GOVERNANCE AND MANAGEMENT

Governing Document

Stamperland Parish Church of Scotland, Clarkston is administered in accordance with the terms of the Unitary Constitution.

Recruitment and Appointment of Trustees

Under the Unitary Constitution all elders are charity trustees. Elders are chosen from those members of the church who are considered to have the appropriate gifts, skills and commitments to undertake, along with the minister, responsibility for the life of the congregation in all its aspects including worship, mission and service to the wider community. The minister is elected by the congregation and inducted by Presbytery and is automatically a trustee. When there is no minister, Presbytery appoint an Interim Moderator; the Interim Moderator is automatically a trustee.

Additional trustees are appointed from within the congregation and members of the congregation are invited to nominate individuals who have the skills and commitment to contribute to the management of the church, particularly in relation to the maintenance and development of the fabric of the church buildings and to the financial affairs of the church. These additional trustees may be elected and appointed at the Stated Annual Meeting of the Congregation or co-opted to serve as trustees.

Organisational Structure

Kirk Session meetings attended by all trustees are held approximately ten times a year. Moderated by the minister (or interim moderator if the church is vacant) these meetings provide the forum for decision making. Attendance is open to all members of the church and all members may contribute to debates. However, only elders and additional trustees have decision-making authority.

Within the Kirk Session there are nine permanent committees each with specific remits to inform, oversee and manage the work of the church. In addition there are trustees who have responsibility for overseeing Health & Safety (H&S), protection of vulnerable groups (PVG) and food hygiene. A chart showing the organisational structure is presented on page 7.

OBJECTIVES AND ACTIVITIES

The Church of Scotland is Trinitarian in doctrine, Reformed in tradition and Presbyterian in polity. It exists to glorify God and to work for the advancement of Christ's Kingdom throughout the world. As a national church, it acknowledges a distinctive call and duty to bring the ordinances of religion to the people in every parish of Scotland through a territorial ministry. It co-operates with other churches in various ecumenical bodies in Scotland and beyond.

In Stamperland Parish Church, Sunday Worship, to which anyone has access, takes place every Sunday morning. The sacrament of Holy Communion is celebrated four times a year. The church is open on a Wednesday morning offering a period of quiet reflection and contemplation. Additional services take place at significant times, for example, Easter and Christmas.

Christian Education for youth takes place on Sunday mornings with the BB Bible Class and Sunday School departments catering for those aged between three and 18 years. For adults, there is a House Group which meets fortnightly for Bible study. The minister's provision of teaching and discussion material as well as church membership instruction classes provides a means for the Christian education of adults.

The Guild meets every Tuesday evening from October to March and offers a varied and highly enjoyable programme of speakers, music and crafts, tea and fellowship. The Guild is open to all people.

VISION AND MISSION STATEMENT

To bring God's message.
To be the focus of people's lives.
To be seen as something people want to be a part of.
To reach out to people, supporting them, showing care, compassion, love and fun.
Our church should be a joy to belong to, a meaningful part of the community.
Our church should move with the times and always be relevant ... both here and in the wider world.

The church seeks to support and minister to all people within the parish and beyond and we therefore seek to engage with people in a variety of ways. Over the past six or seven years we have made the church premises available for the “Heart for Art” project which uses creative art to provide therapy for people with dementia, enhancing their feelings of self worth and achievement. Classes are held on Friday afternoons. In relation to interaction with youth, our minister serves as a chaplain to Williamwood High School and Netherlee Primary School. Netherlee Primary school is welcomed into the church for Christmas, Easter and end-of-term services.

The church supports Youth Organisations including The Boys’ Brigade, The Scouts and The Guides which, together, provide a wide range of activities enjoyed by just under 200 children each week. Membership of The Scouts and The Guides is open to all young people regardless of their religious beliefs.

The church and associated organisations arrange a variety of social and fund-raising activities; these include Spring and Christmas Fairs, concerts, quizzes and a range of social events, all of which are open to the general public. Occasional events are specifically targeted to encourage families with young children to attend.

Hall accommodation is provided for a range of community activities and occasional meetings of local community groups. The halls are used by organisations including Baby Sensory, which provides sensory development activities for babies and parents, Sounds International, an adult choir drawing its membership from people of diverse nationalities and religious backgrounds and EROS Musical Society, an amateur dramatics society based in Clarkston

The safety and security of all people attending and using the church and associated halls is of great importance. The church has a co-ordinator for the Protection of Vulnerable Groups (PVG) and all adults who have contact with children and young people in the Youth Organisations have clearance through Disclosure Scotland. CCTV recordings are made of people entering and leaving the halls. Health and Safety is an agenda item at all meetings of the Kirk Session and safety procedures are regularly reviewed. PVG is an agenda item at all regular meetings of the Kirk Session.

Members of the church are active within the local community and are involved with community councils, neighbourhood watch schemes, health boards, etc..

Members are also active in supporting various charities and organisations both by giving of their time and through financial donations. There is direct involvement with charities such as Christian Aid, with homes for the elderly including, specifically, Williamwood House, and with organisations such as The Lodging House Mission. Members of the church lead the service at Mearns Kirk Hospital on a regular basis and the minister conducts a monthly service at Clarkston Care Home. The minister also conducts regular worship services at Eastwoodhill Care Home.

As a parish church there is a desire to support those in the parish in times of stress and the church is always there to offer various types of support to those living in the parish. Often the need for support and its nature is confidential but an obvious example is support at a time of bereavement.

ACHIEVEMENTS AND PERFORMANCE

From March 2014 up to 30th November 2017 Stamperland Parish Church was vacant with Rev Gray Fletcher acting as Interim Moderator and Rev John Drummond acting as locum minister. On 30th November 2017, Rev Scott Blythe was inducted as minister of Stamperland Church. The Rev Scott Blythe will be the minister of Stamperland Church until summer 2018. When Rev Tom Nelson, minister of Netherlee Parish Church, retires in mid 2018, Rev Scott Blythe will become the minister of the linked congregations of Netherlee and Stamperland.

The year 2017 ended with 281 members on the Congregational Roll, 45 fewer than the previous year. This significant reduction followed an instruction from the Church of Scotland in relation to the Data Protection Act to the effect that written consent had to be given by every member for their name to be listed in the Communion Roll. Almost 40 names were removed representing people who did not respond to at least three letters seeking authorisation to have their names included in the Roll. Three new members joined the church. Eight members died and two transferred to other churches.

The number of young people on the rolls of Stepping Stones and Quest was 15, three more than the previous year. Over the year the uniformed organisations (Scouts, Guides and Boys’ Brigade) have enjoyed an increase in numbers with the combined roll standing at 194 in December 2017. The number of boys attending the Scout Group is 61 with 26 being in the Scout and Explorer Scout sections. There are 79 girls in the Guide Association of whom 37 are members of the Guide company section. There is a total of 54 boys in the BB, 26 of whom are members of the Company section. The number of Anchor Boys (the youngest section of the BB) doubled during the year reflecting a positive outcome to a recruitment campaign. Both Brownies and Rainbows have waiting lists and all organisations would welcome additional adult leaders.

The numbers attending ‘Sunday Break’ at the close of morning worship are steady at around two dozen and a similar number of people attend ‘Open Door’ on Wednesday mornings. Holy Week services were well attended as was the early morning Dawn Easter Day Service in Linn Park which was, this year, also attended by members from Netherlee Parish Church. These services were led by elders as was the Pyjama Service, held early in the evening of Christmas Eve and aimed at children and families.

During the year, the locum minister and minister conducted three baptisms, no weddings and 18 funerals [8 members and 10 non-members]. Support for bereaved families is demonstrated in a number of ways including through the “Flower Ministry” in which the flowers on display in the church sanctuary at the Sunday morning service are distributed to people within the congregation or parish as a token of remembrance or thanks. Additionally, the church maintains a Book of Remembrance recording the names of deceased persons who have a link with the church and parish. The Book of Remembrance is on public display.

Through a variety of initiatives the church strives to maintain its reputation and promote its profile within the parish. The church’s presence on the internet, including Facebook and YouTube, is indicative of new and different forms of contact. Wireless internet connection is available within the church hall accommodation.

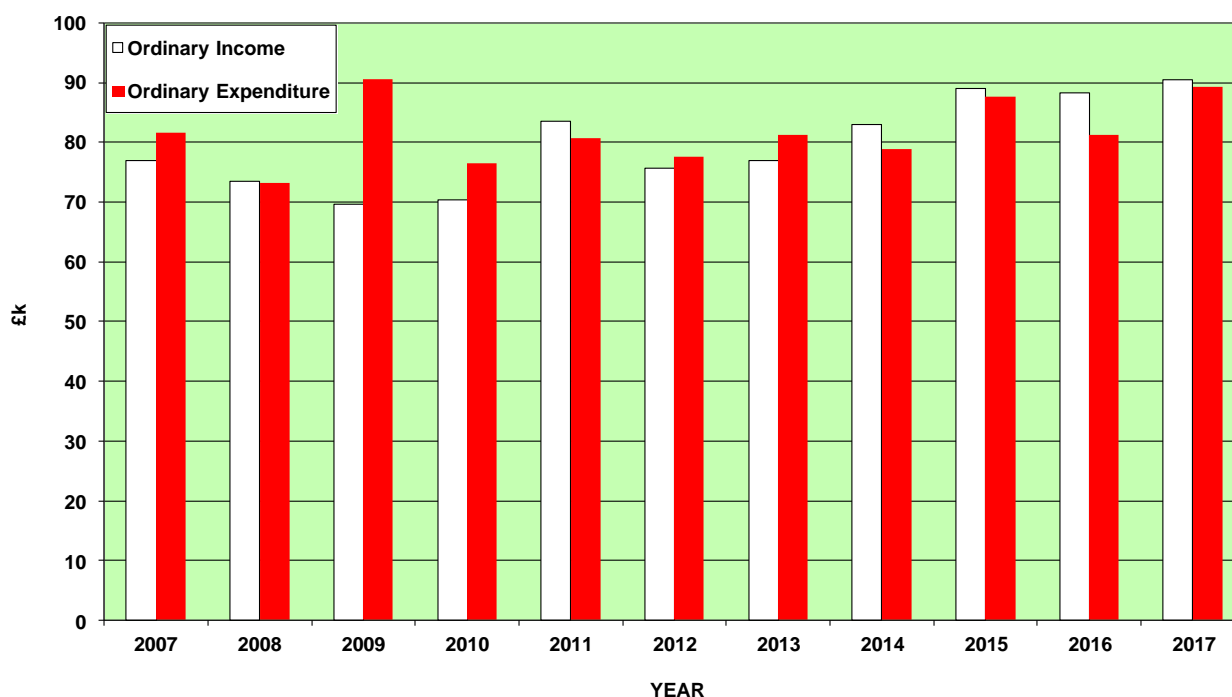
As well as supporting charitable activities within the church and parish, £1,473 was raised through Special Collections and Fund Raising Events for the specific causes or charities. Details of amounts raised are summarised in Note 8 on page 13.

In addition to purely financial donations, a large quantity of tins and packets of food donated at the Harvest Thanksgiving service was taken to the Lodging House Mission. Earlier in the year, a large number of backpacks filled with educational materials, clothes and toiletries were collected and donated to Mary’s Meals Backpack Project. The church continues its support for the East Renfrewshire Food Bank in Barrhead with church members making regular donations throughout the year and special donations of gifts at Christmas.

FINANCIAL REVIEW

In common with most churches, our membership has been in decline for the last 50 years. From a peak membership of 1,030 in 1959, the current membership of 281 is the lowest figure recorded since the establishment of the church in 1940. Over the last ten years membership has reduced from 420 – a reduction of one third. With reductions in membership, the financial support of the church falls on an ever smaller number of members and, in particular, the members who are actively involved in the life and work of the church.

INCOME & EXPENDITURE - THOUSANDS OF POUNDS



During the past ten years there have been occasions where our expenditure has exceeded our ordinary income (defined by the Church of Scotland as total income minus legacies and bank interest). Over the last few years we have been developing a stewardship culture in which we have been encouraging members to regularly

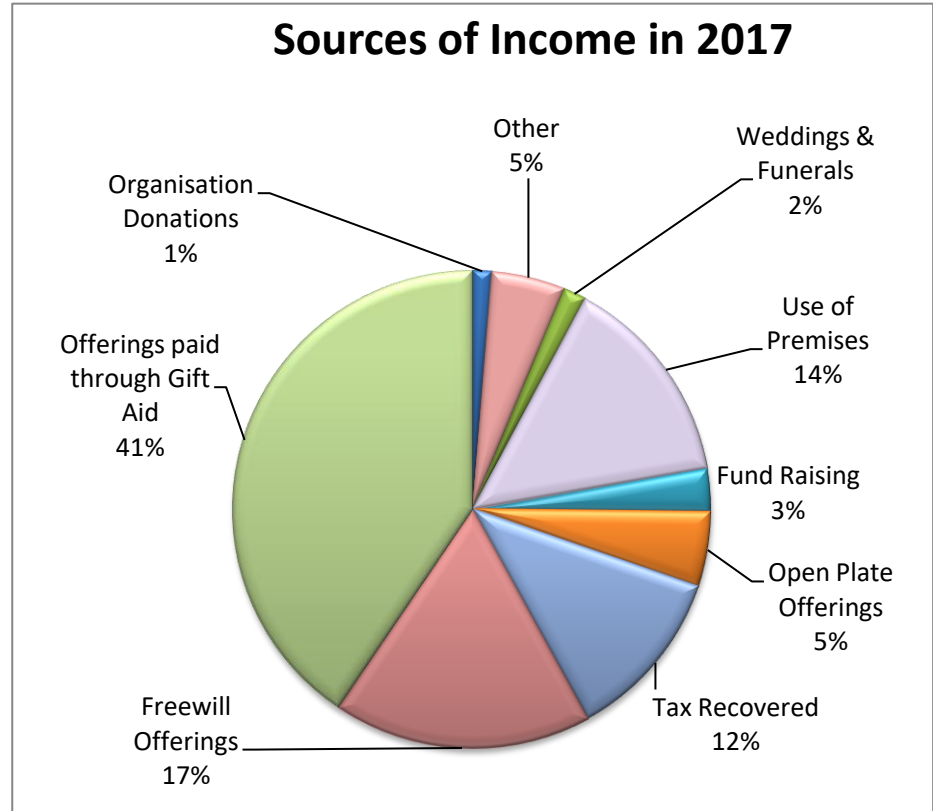
review and increase their offerings while, at the same time, we have maintained close control of expenditure. In the last four years we have managed to ensure we have ended our financial year with a surplus of ordinary income over expenditure.

Analysis of Income

The chart on the right shows a breakdown of the principal sources of income in 2017.

Offerings paid through Gift Aid along with the tax recovered contributed (53%) of the regular, “ordinary income”. These offerings represent the single most important source of income. Freewill offerings and open plate together accounted for 22% of ordinary income. In 2017 offerings were essentially unchanged from the previous year and this illustrates the commitment of many of the members to the support of their church.

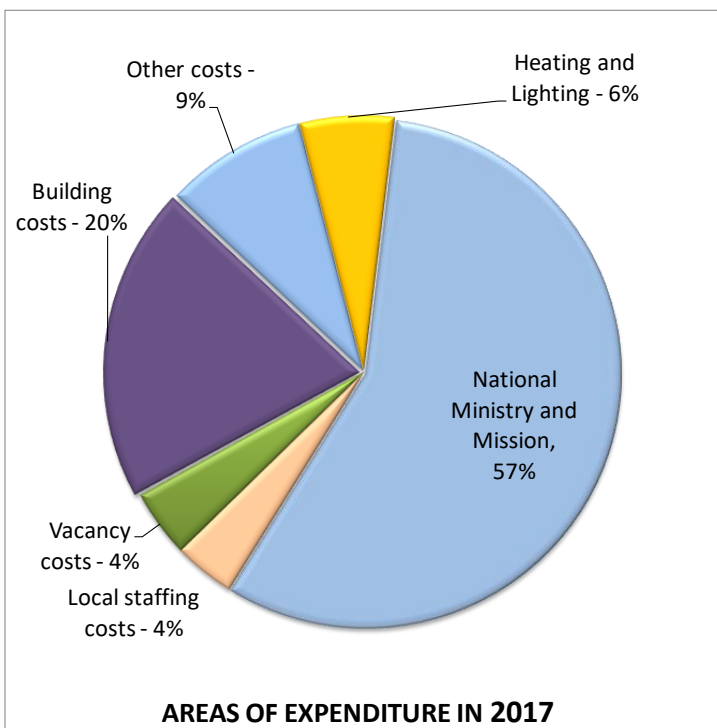
Income from the use of premises by third parties was £13,074. This amount was



essentially unchanged from the previous year’s income and represents fourteen per cent of ordinary income. The largest contributor to rental income is Baby Sensory, an organisation which provides sensory development activities for babies from birth to three years of age. They occupy the large and small halls every Monday morning and afternoon. Sounds International use the large hall on Tuesday evenings with EROS Musical Society using this accommodation on Wednesday evenings. A variety of keep-fit classes take place during the week and there have been hires by various community and local groups for events ranging from art exhibitions to children’s parties. There are frequent enquiries from a wide range of organisations seeking to hire accommodation on weekday evenings. However, our halls are already fully used every evening.

Analysis of expenditure

The chart on the left illustrates the major categories of expenditure in 2017.



The greatest expense is the payment of £50,776 to the National Ministry and Mission Fund and to the Presbytery of Glasgow. This amount includes our contribution to the stipends of ministers and locum ministers within the Church of Scotland, to the wider work of the Church of Scotland and to Glasgow Presbytery. We have no control over our allocation and expenditure on these items represents well over half (57%) of our total expenditure.

In 2017, expenditure associated with the buildings was £17,817. This amount includes insurance, cleaning of the church and halls as well as fabric repair and maintenance. A major item of fabric expenditure was the replacement of fluorescent tube lights with LED tubes in the sanctuary, large hall and small hall at a cost of £4,344. The new lights should reduce the annual consumption of electricity associated with lighting throughout the church buildings. Other significant items of fabric expenditure

included repair work on the Manse roof (£1,578), maintenance of the gas central heating system in the church (£1,203) and work associated with repairing the lintel and door of the emergency exit in the sanctuary (£991).

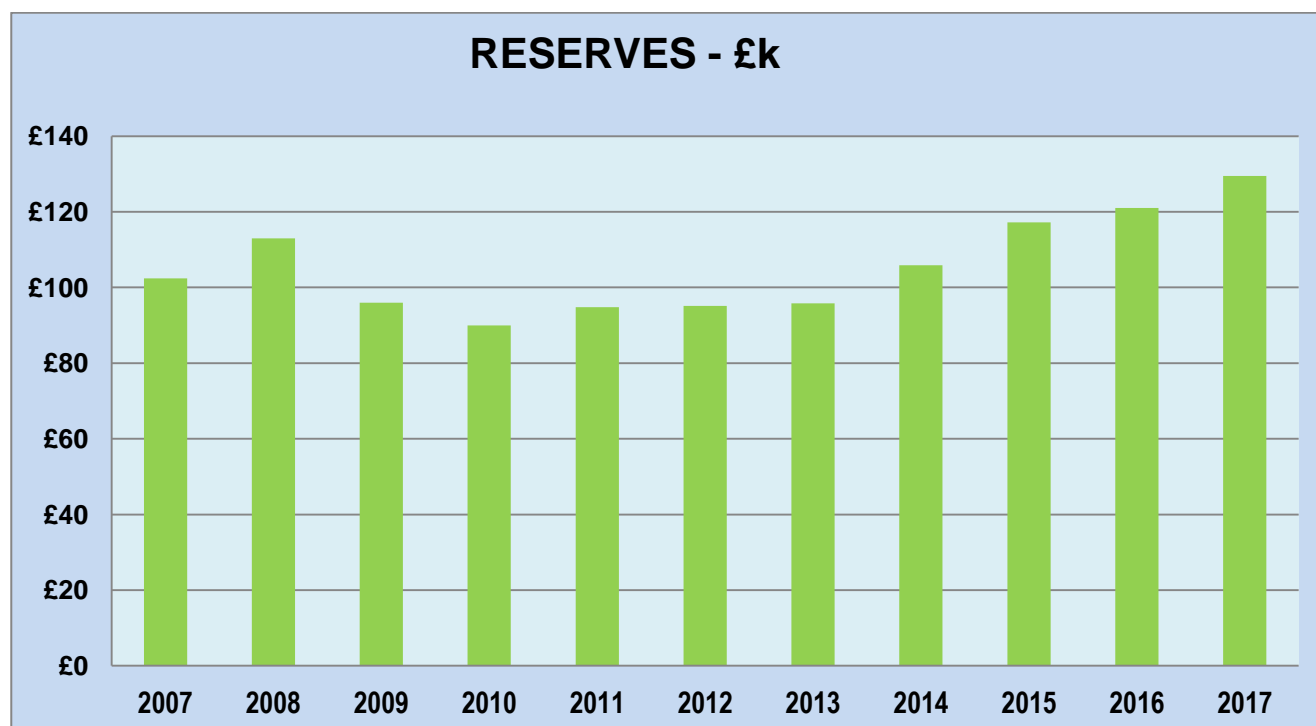
Expenditure on heating and lighting the church and halls during 2017 was £5,346, eight per cent lower than the previous year. Some of the reduction in expenditure is the result of careful attention to ensuring that, whenever possible, heating is restricted to areas of the church buildings actually being occupied by organisations. Savings attributable to the installation of LED lights would have been limited with the fluorescent tube lighting in the halls only replaced with the more efficient LEDs in November 2017.

Expenditure associated with filling the vacant ministry post was £3,810 and included costs associated with advertising in Life & Work, air fares, costs of furniture removal and insurance and the minister's "disturbance allowance". All of the vacancy costs were shared equally with Netherlee Parish Church.

Reserves Policy

It has been the Trustees' policy to have a reserve in the General Fund of about two month's normal expenditure and, in addition, to have sufficient funds in the Fabric Fund to enable essential repairs to be undertaken and to facilitate the purchase of major capital items such as duplicators, amplifiers, computers, etc. should they become unserviceable and require to be replaced.

The church has been fortunate in receiving a number of legacies. Some of the money from these legacies has been used to cover the deficit between the normal, regular income and the normal, regular expenditure and to enable significant upgrading work to be undertaken.



At the end of 2017 the total bank and cash balances stood at £127,528. The General Fund balance was £11,304. The balance in the Fabric Fund was £115,000. The Copper Fund had a balance of £235. The balance in the Kean Bequest (a restricted fund specified to be used for the purpose of Elder Training) was £1259. The value of the investment in the Church of Scotland Investor's Trust Growth Fund at 31st December 2017 was £4,320.

It has been the Trustees' policy to maintain a Roof Contingency Fund within the Fabric Fund to meet the cost of renewing the waterproof covering on the flat roof of the main church building. The existing roofing material was replaced over 25 years ago and was guaranteed for only a ten year lifespan. It is anticipated that the cost of replacing the roof could be well in excess of £50,000 and the Trustees have increased the previous year's allocation to £56,000.

During much of the vacancy the Stamperland Manse, 109 Ormonde Avenue, has been let to a tenant. Rental income, minus expenses, is paid directly to the General Trustees in Edinburgh. At 31st December 2017, the funds held by General Trustees on our behalf amounted to £14,448. Following his induction to Stamperland Parish Church at the end of November, Rev Scott Blythe and his family have been staying in the former

Netherlee Church Manse at 25 Ormonde Avenue. In 2018, up to the time of the retiral of Rev Tom Nelson at which point Stamperland Parish Church and Netherlee Parish Church will link, Stamperland Church will pay the fair market rental cost of 25 Ormonde Avenue to Netherlee Church. It is anticipated that the costs incurred by Stamperland Church in renting 25 Ormonde Avenue will be met from the funds associated with the rental income of 109 Ormonde Avenue which are held by the General Trustees.

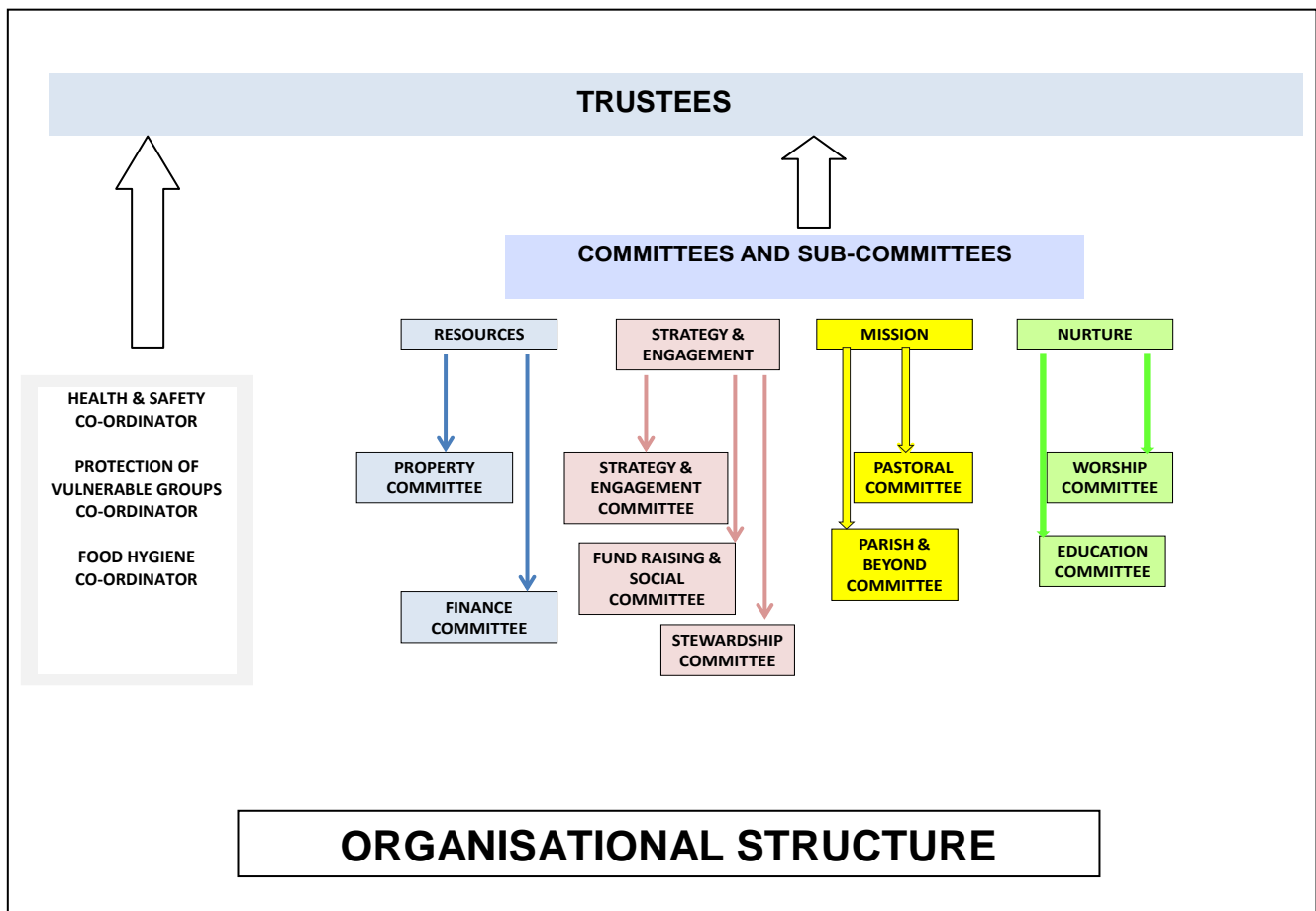
Statement of Trustees' Responsibilities

The Trustees must prepare financial statements which give sufficient detail to enable an appreciation of the transactions of the Church during the financial year. The Trustees are responsible for keeping proper accounting records which, on request, must reflect the financial position of the Church at that time. This must be done to ensure that the financial statements comply with the Charities and Trustee Investment (Scotland) Act 2005, the Charities Accounts (Scotland) Regulations 2006 (as amended) and the Regulations For Congregational Finance approved by the General Assembly of the Church of Scotland in 2016. They are also responsible for safeguarding the assets of the Church and must take reasonable steps for the prevention and/or detection of fraud and other irregularities.

Approved by the Trustees and signed on their behalf,

A Norman Bolton
Session Clerk

Date 28th January 2018



Stamperland Parish Church of Scotland, Clarkston SC003155

Independent Examiner's Report to the Trustees of Stamperland Parish Church of Scotland, Clarkston

I report on the accounts of the charity for the year ended 31st December 2017 which are set out on pages 9 to 13.

Respective responsibilities of trustees and examiner

The charity's trustees are responsible for the preparation of the accounts in accordance with the terms of the Charities and Trustee Investment (Scotland) Act 2005 and the Charities Accounts (Scotland) Regulations 2006.

The charity trustees consider that the audit requirement of Regulation 10(1) (d) of the Accounts Regulations does not apply. It is my responsibility to examine the accounts as required under section 44(1) (c) of the Act and to state whether particular matters have come to my attention.

Basis of independent examiner's statement

My examination is carried out in accordance with Regulation 11 of the Charities Accounts (Scotland) Regulations 2006. An examination includes a review of the accounting records kept by the charity and a comparison of the accounts presented with those records. It also includes consideration of any unusual items or disclosures in the accounts, and seeks explanations from the trustees concerning any such matters. The procedures undertaken do not provide all the evidence that would be required in an audit, and consequently I do not express an audit opinion on the view given by the accounts.

Independent examiner's statement

In the course of my examination, no matter has come to my attention

1. which gives me reasonable cause to believe that in any material respect the requirements:
 - to keep accounting records in accordance with Section 44(1)(a) of the 2005 Act and Regulation 4 of the 2006 Accounts Regulations, and
 - to prepare accounts which accord with the accounting records and comply with Regulation 9 of the 2006 Accounts Regulations have not been met, or
2. to which, in my opinion, attention should be drawn in order to enable a proper understanding of the accounts to be reached.

Alexander Johnston
Chartered Accountant

9 Williamwood Park
Netherlee
Glasgow
G44 3TD

Date 5th February 2018